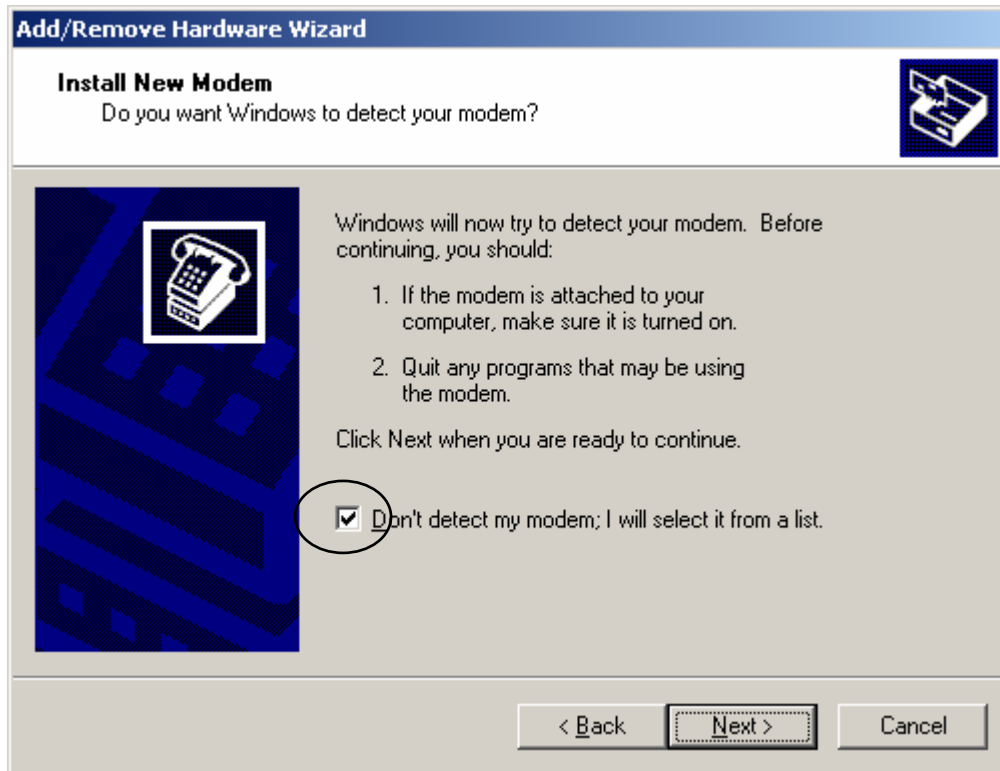
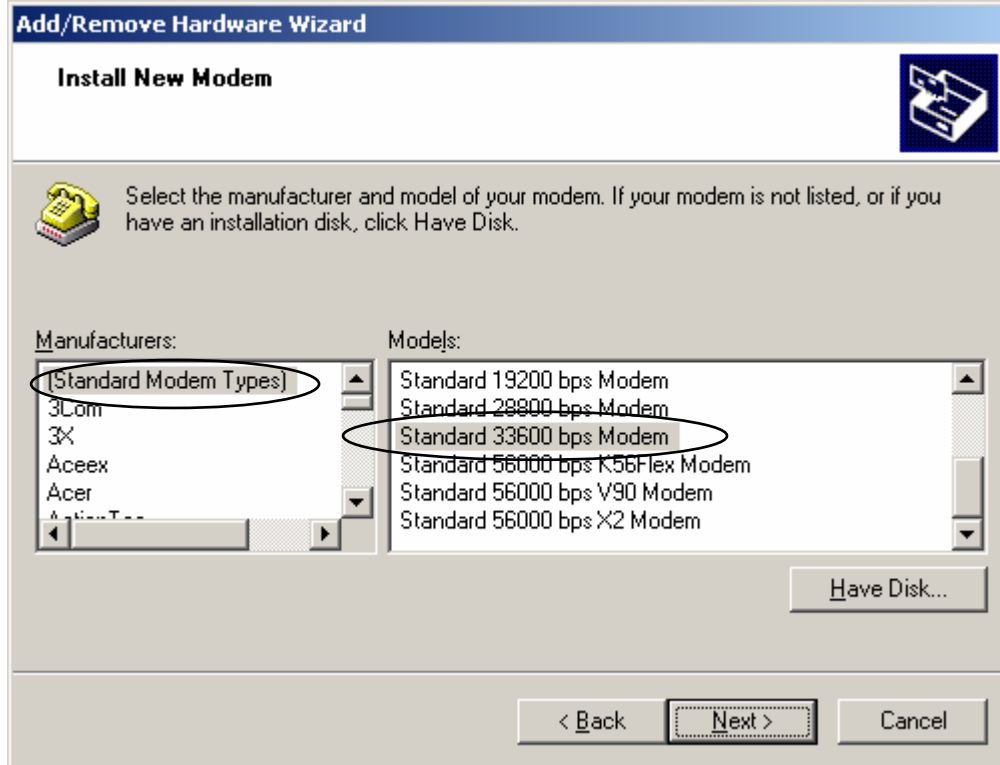


## WIN 2000 Configuration for Internet Access

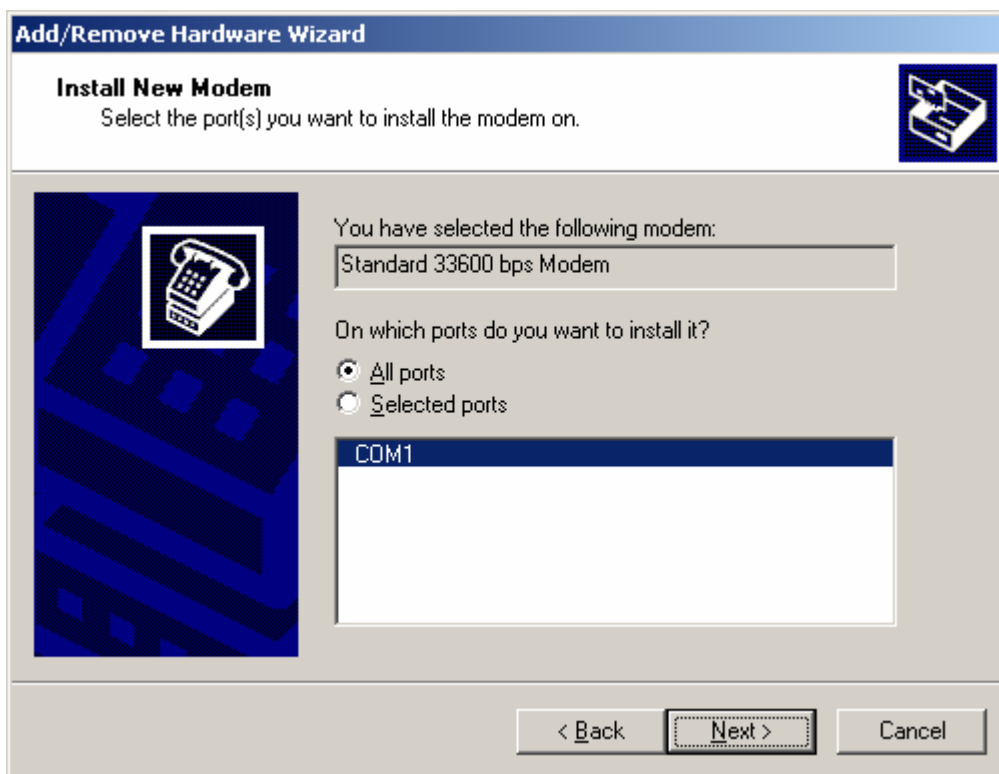
1. Create a standard 33,600 bps Modem on the PC. Select “Control Panel - Phone and Modem Options”, and then click “Add”.
2. Click “Next” and select “Don’t detect my modem; I will select it from a list”.



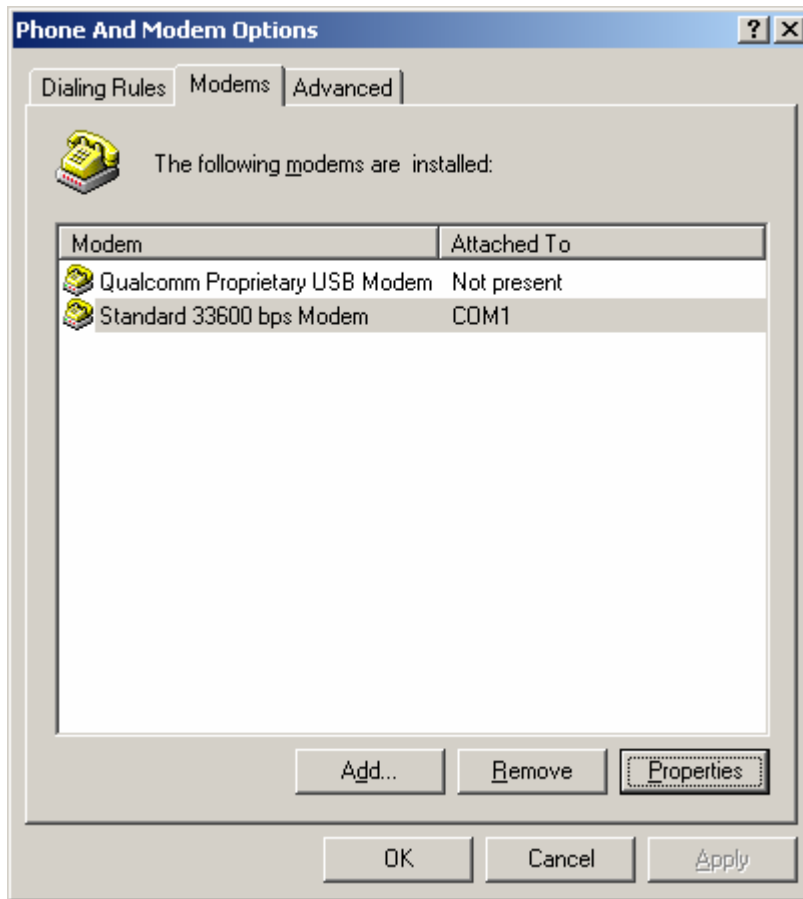
3. Select “Standard Modem Type” as the Manufacturer and select “Standard 33600 bps Modem” as the Model.



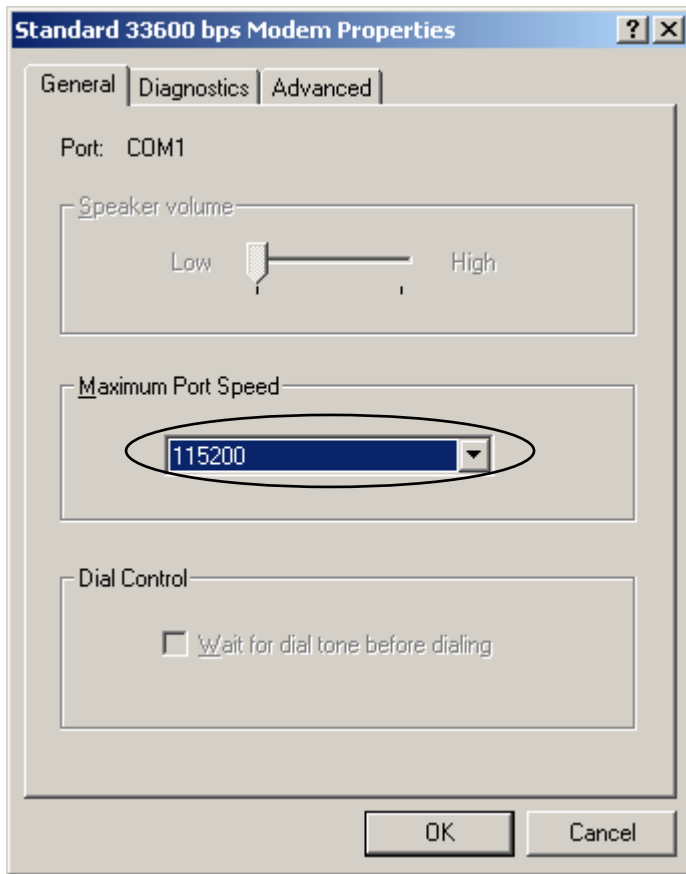
4. Click "Next", Select the serial port, e.g., COM1.



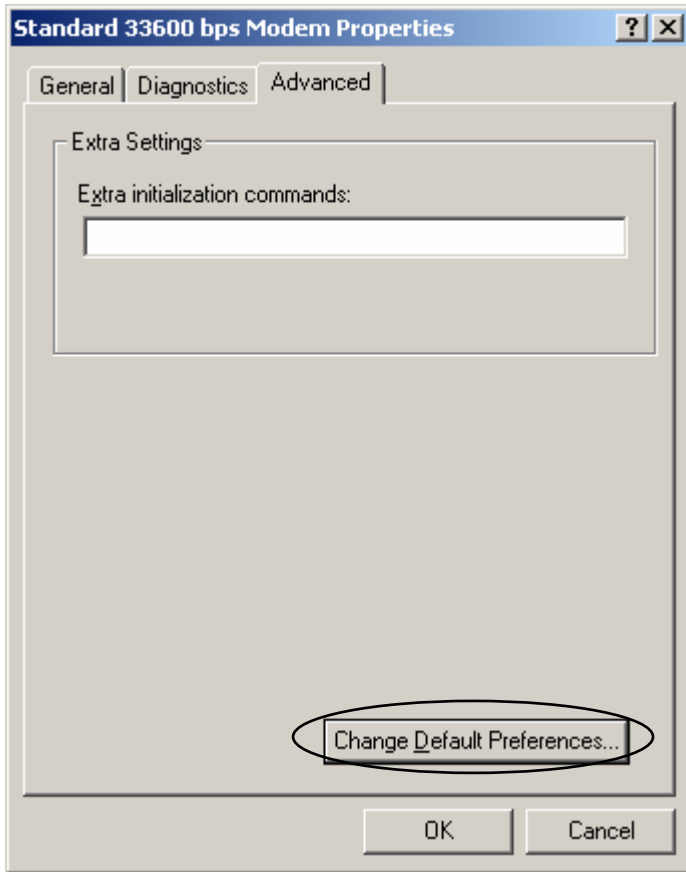
5. Click "Next" to finish.
6. Select the newly created Modem in "Phone and Modem Options", select "Properties"



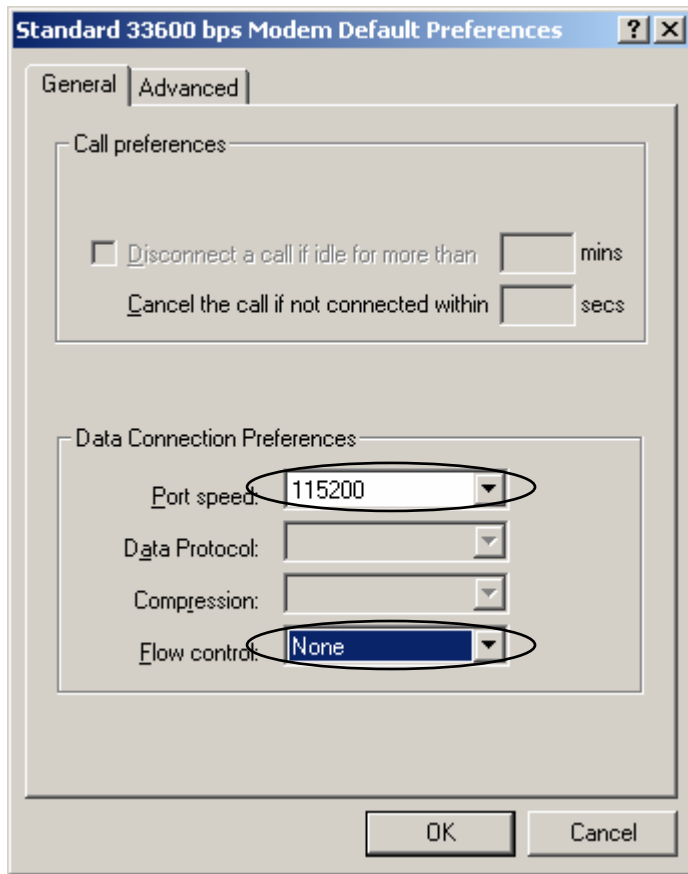
7. Select "Maximum port speed" as "115200" in the "General" tab.



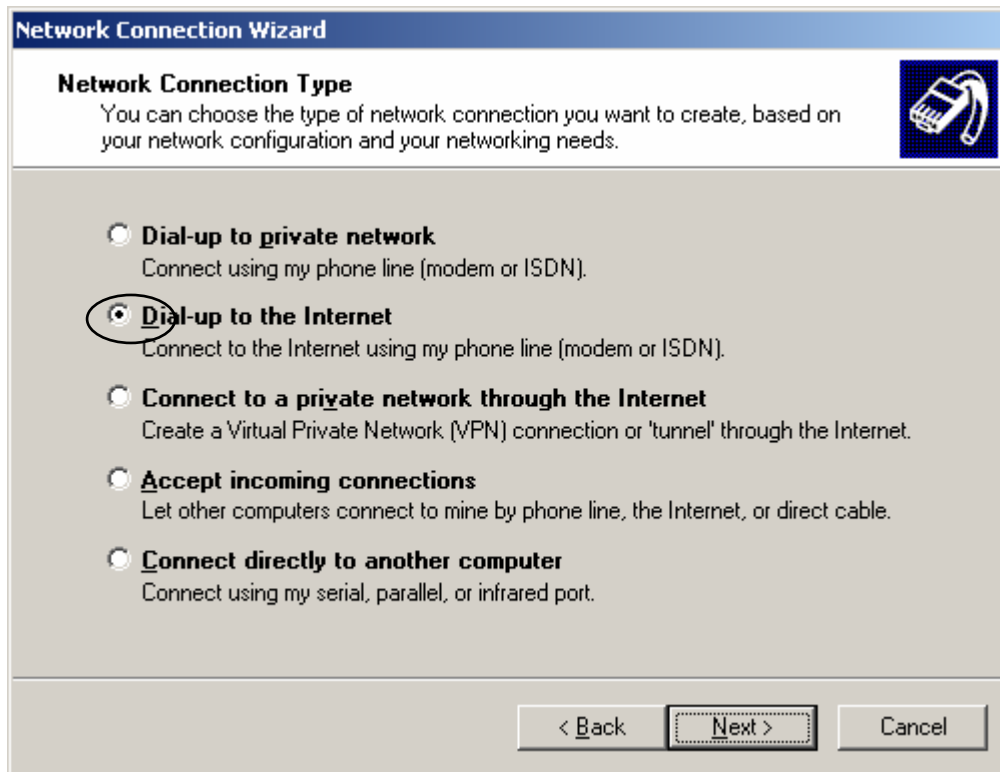
8. Click "Change Default Preferences" from "Advance" tab.



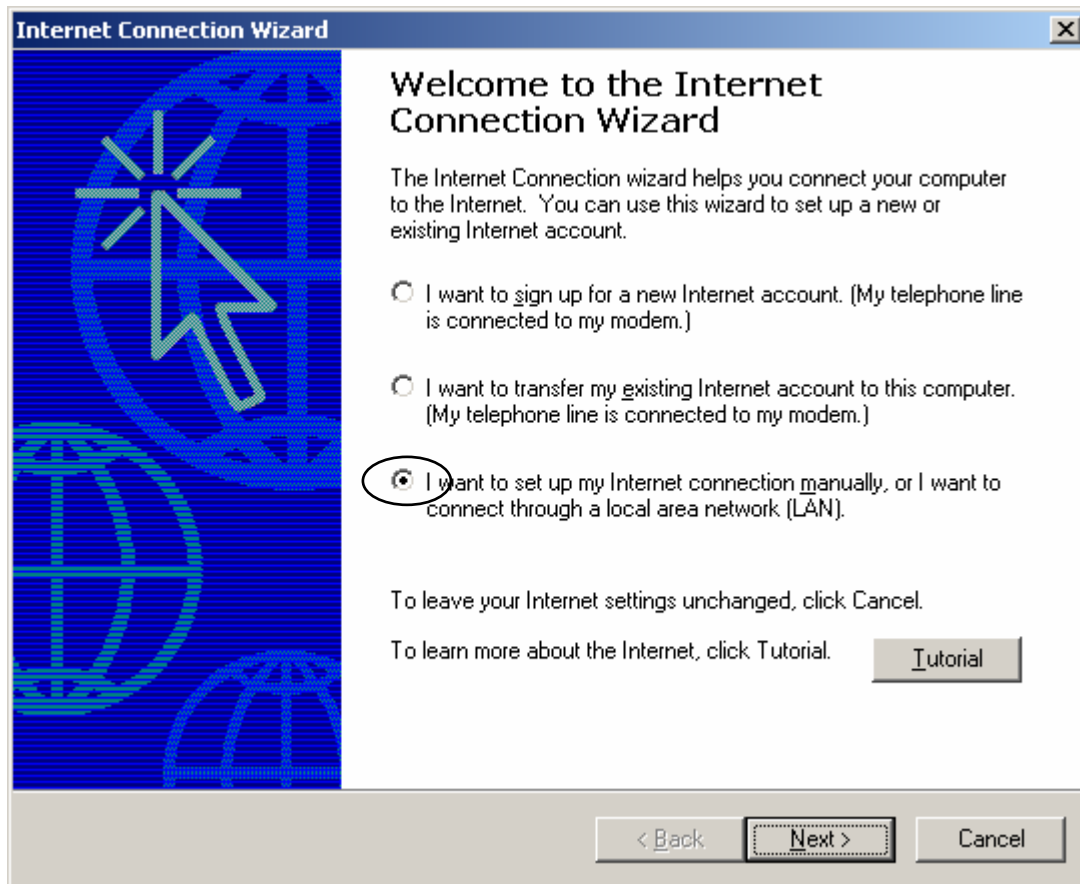
9. Select "Flow control" as "None".



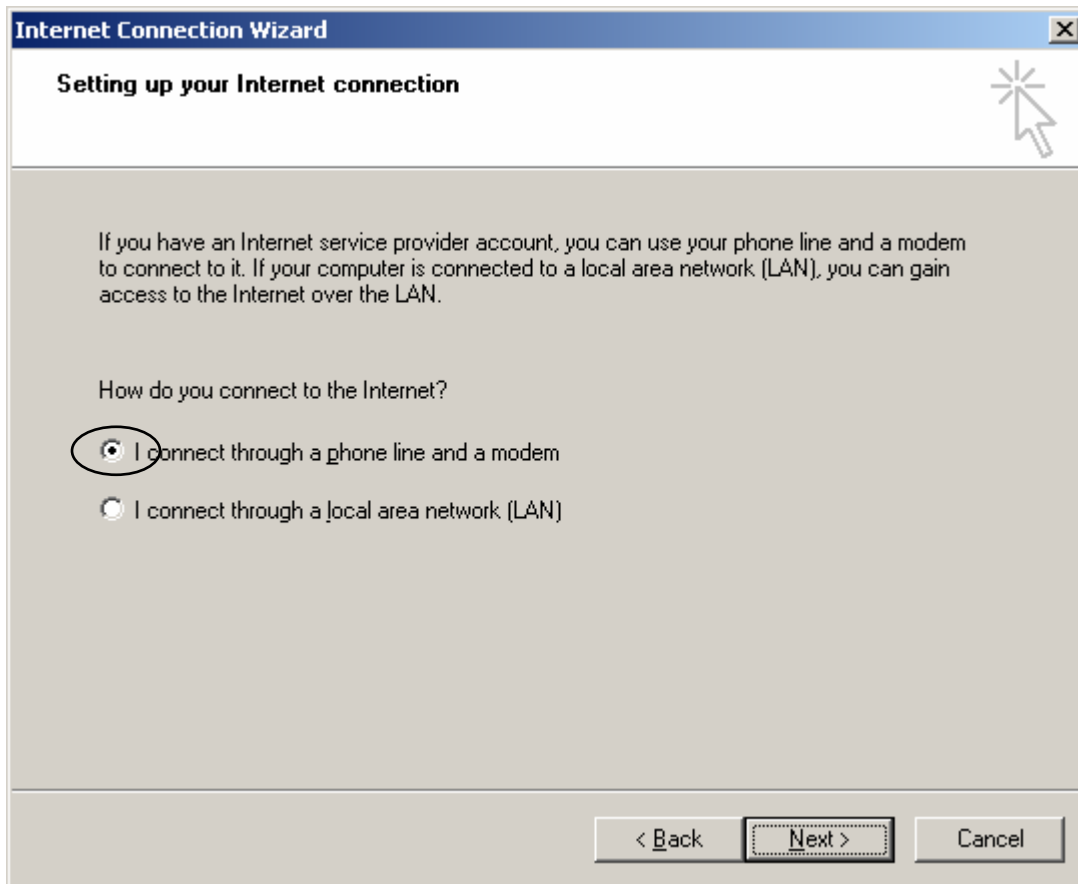
10. Click "OK" to complete the Modem Setting.
11. Create the dial-up network. Enter "Start" – "Setting" – "Network Connections", and double click "New Connection".
12. Click "Next", and select "Dail-up to the Internet".



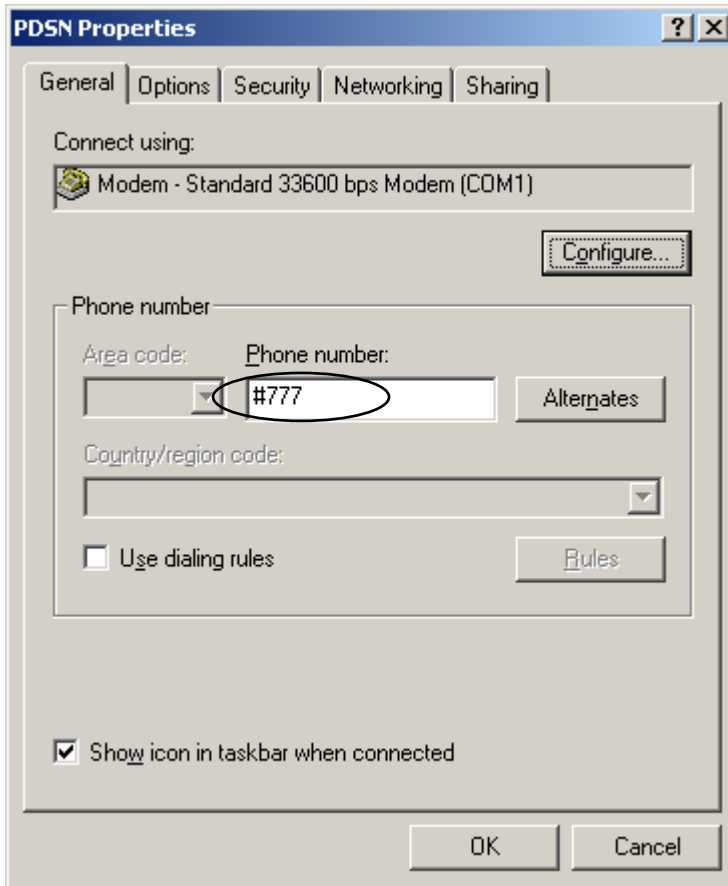
13. Click “Next”, and select “I want to set my Internet connection manually, or I want to connect through a local area network”.



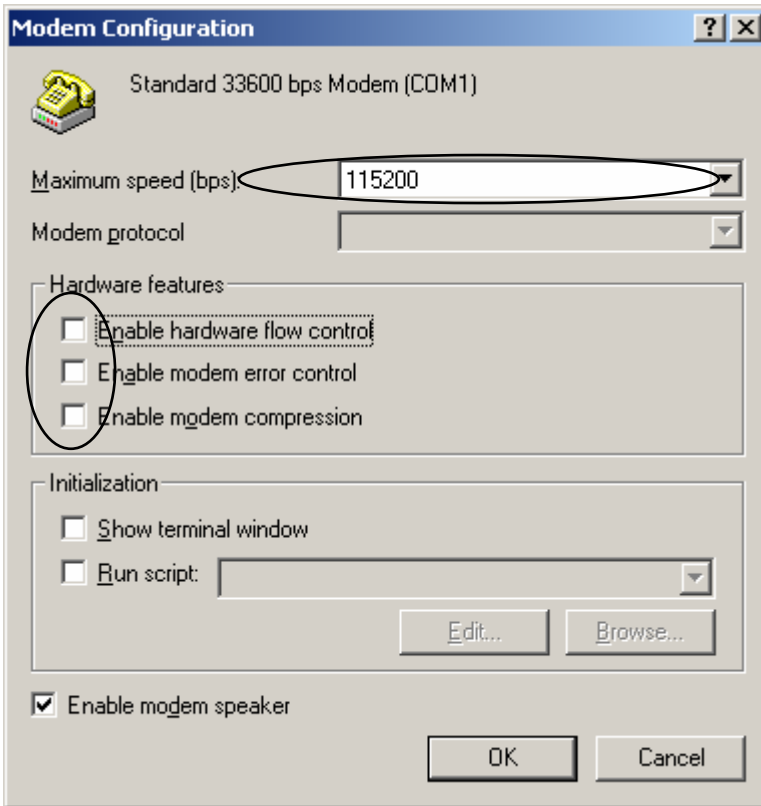
14. Click “Next”, and select “I connect through a phone line and a modem”.



15. Click “Next”, and select the newly created modem.
16. Click “Next”, fill in the phone number, which must be #777.
17. Fill in the user name and password.
18. Click “Next”, and enter the connection name.
19. Click “Next”, and select “Do not create Internet account”.
20. Click “Next” to finish.
21. Select the newly created connection in “Network and Dial-up Connection”, and right click to select “Properties”, cancel use dialing rules.



22. Click “Configure”, and select the speed as 115200, and cancel “Enable hardware flow control”.



23. Click "OK".

24. Double-click the newly created connection, and enter the user name and password for connection.

25. Open the web page in IE for Internet access with successful dial-up.

**Note: Nepal Telecom should provide the user name and password.**